



Creation: Animals and Man

Genesis 1:20-21, 1:24-28

Name

Word Search

Find the animal kinds in the Word Search. Then sort the animals and list them into their proper "kind."

R	O	C	K	H	O	P	P	E	R	J	H	O	K	A
X	F	O	X	T	W	X	T	D	M	Y	B	F	R	K
E	N	Z	D	O	Q	Z	M	A	A	L	U	A	A	V
T	M	F	A	L	I	U	C	C	D	U	B	I	P	V
O	E	L	V	S	S	A	D	Q	J	I	D	G	Q	I
Y	J	O	E	T	R	D	B	V	A	O	N	Y	M	O
O	C	W	A	O	C	O	A	N	K	I	A	G	Y	Z
C	D	N	N	K	J	V	R	T	K	S	Y	E	O	D
L	G	I	K	K	K	J	Y	E	M	U	K	L	K	Y
M	P	O	L	A	R	B	L	L	P	N	V	H	P	U
Z	G	F	F	G	F	Z	Z	A	O	M	A	N	A	P
E	X	U	J	J	N	E	Z	D	K	Q	E	R	N	U
Q	K	Y	N	O	P	B	I	O	A	C	E	F	D	S
U	I	L	A	Y	O	R	R	K	S	S	A	X	A	S
E	M	S	B	D	Y	A	G	W	I	D	X	J	Z	Z

- ARABIAN
- COYOTE
- DINGO
- DONKEY
- EMPEROR
- FOX
- GRIZZLY
- JACKAL
- KING
- KODIAK
- MACARONI
- MUSTANG
- PANDA
- POLAR
- PONY
- ROCKHOPPER
- ROYAL
- SLOTH
- WOLF
- ZEBRA

1. _____
2. _____
3. _____
4. _____
5. _____



Dog Kind

1. _____
2. _____
3. _____
4. _____
5. _____



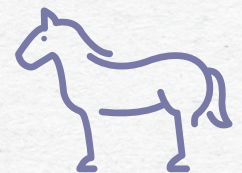
Bear Kind

1. _____
2. _____
3. _____
4. _____
5. _____



Penguin Kind

1. _____
2. _____
3. _____
4. _____
5. _____



Horse Kind

Psalm 8:3-4

When I look at your heavens, the work of your fingers, the moon and the stars, which you have set in place, what is man that you are mindful of him, and the son of man that you care for him?

Memory Verse





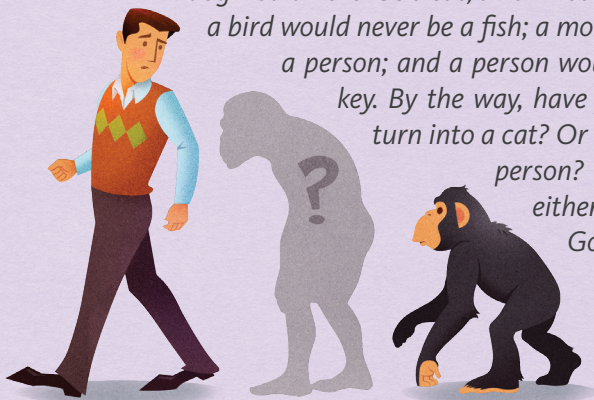
What You Heard *In the Word*

- God created flying creatures, sea creatures, and land animals to reproduce “according to their kinds” on Days Five and Six of Creation Week.
- Unlike the animals, people are created in God’s image—different from animals. We can have a relationship with God through Jesus Christ.

OutWord *For Family Discussion*

Suppose someone tells you that you evolved from an ape-like creature. You may hear this from a friend, a teacher, or someone at a museum. **What would you say?**

I believe the Bible. God’s Word does not lie. When God created animals, He created them according to their kinds. These kinds are totally different from each other—and one kind can’t turn into another kind. For example, a dog would never be a cat; a lion would never be a giraffe; a bird would never be a fish; a monkey would never be a person; and a person would never be a monkey. By the way, have you ever seen a dog turn into a cat? Or a monkey turn into a person? No one else ever has either. I think I’ll stick to God’s Word!



HomeWord *For Parents*

“And God saw everything that he had made, and behold, it was very good. And there was evening and there was morning, the sixth day” (Genesis 1:31). God created the flying creatures and great sea creatures on Day Five. These were created according to their kinds (Genesis 1:21). On Day Six, God created the land animals—cattle, creeping things, beasts of the earth—all according to their kinds. Lastly, God made His most unique creation—man—formed in the very image of God Himself (Genesis 1:26).

What does it mean that man is created in God’s image? We are different from the animals. We have the capability to reason, to create, to intelligently communicate, and most importantly, to have a saving relationship with the very God who created us through our Savior Jesus Christ (John 3:16). No animal could ever do that!

This entire account of creation challenges the very core of evolution—that all living things evolved from one single-celled ancestor. Genesis clearly states that the plants and animals were created according to their kinds.

This beginning account of creation is the bedrock for the biblical history of God’s Word. We need to stand firm and hold on to what we believe. We dare not discount any of God’s Word. In the words of the prophet Isaiah, “The grass withers, the flower fades, but the word of our God will stand forever” (Isaiah 40:8).

Go to the Online Resource Page for more information.

